

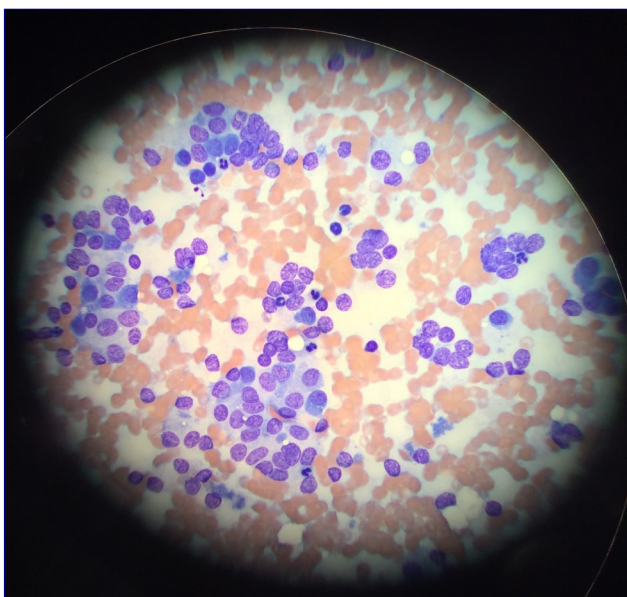
Eastern VetPath telecytopath: STAT digital image cytology interpretation

Our board-certified clinical pathologist will provide immediate cytology interpretations for urgent cases, by reviewing digital images obtained by cell phone and sent to us by email.

- For \$25 per case, we will provide an interpretation as soon as possible, any day or night of the week.
- We strongly recommend following up digital images by sending us glass slides for the most definitive possible interpretation of every case. 2-day FedEx shipping is included in our base pricing; overnight shipping is available for an additional \$10.

Instructions:

1. Find an appropriate area of the cytologic specimen to photograph. Ideally, this should be a monolayer of intact cells (see below).
2. Attach the adapter firmly to an eyepiece.
3. Place your phone on the adapter; shift your phone up/down and right/left to align the camera lens with the eyepiece.
4. Once a bright, circular area can be seen on the display screen of your camera, use the camera's **zoom** function to zero-in on the area of interest.
5. Email ~2-8 pictures of different fields (jpeg form, large to actual size) with a detailed description of the lesion and signalment of the patient to: cleblanc@easternvetpath.com



Pre-zoom



Post-zoom

